

Net.Shark **hand-held** TAP



Taping, Filtering, Aggregation, Storage battery operated device

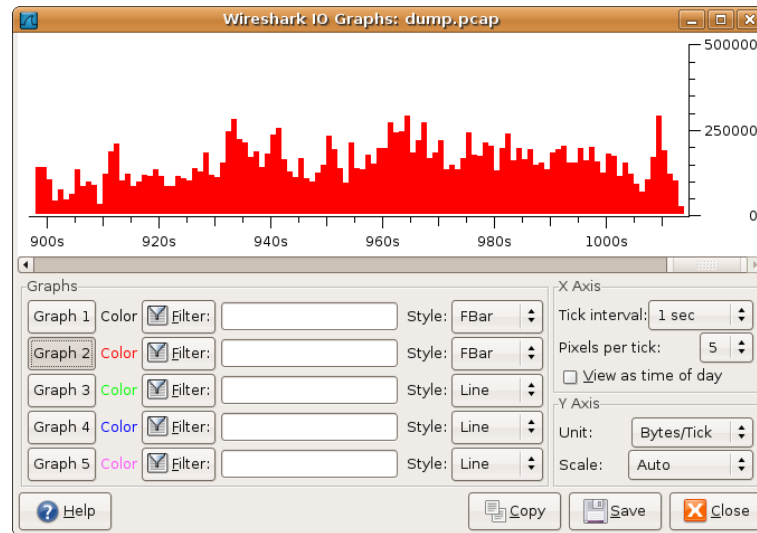


World FIRST



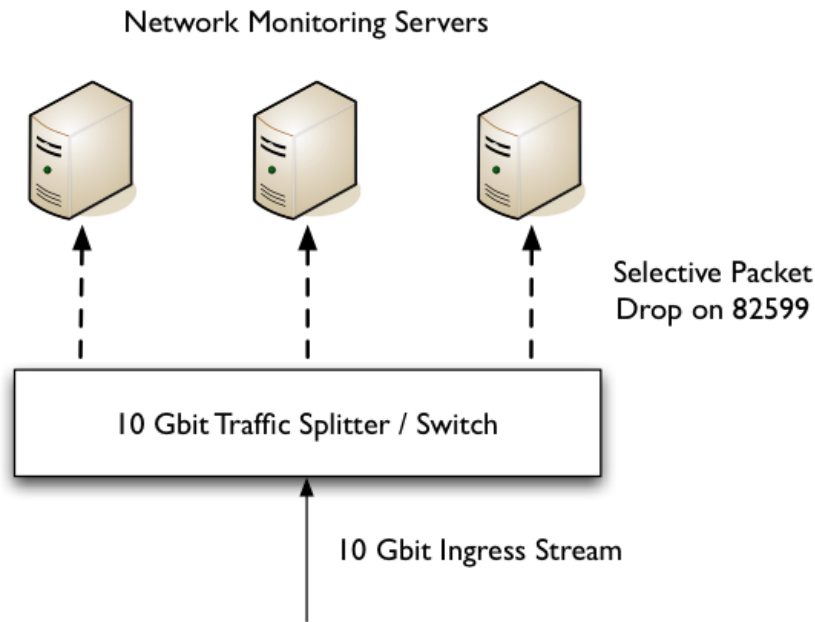
Net.Shark – top featured hand-held tap

4 - Wireshark Limitations - 4



1. It is software therefore...
2. Wireshark cannot capture from two interfaces at once
3. Does not work @ wirespeed (the best is about 90Mbit/s)
4. It is unable to analyse 100% stream without delays
5. It can't filter at 100% wirespeed in a lossless way
6. A PC with Wireshark is not a field tool: not mobility too weaky

Wirespeed Requirement

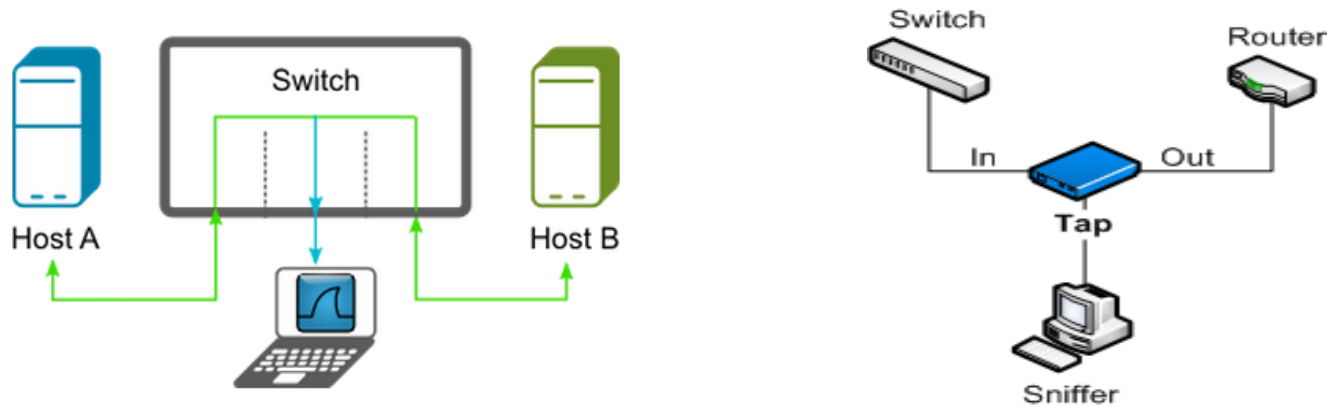


- ◆ Capture the 100% of compliant traffic is key for successful analysis

but.. packet were lost while capturing !!!

- ◆ *What happened?* Not all packets coming could be saved
- ◆ The PC was too slow to handle packets some had to be discarded]

Net.Shark vs. Monitoring Ports



Monitor Ports (MP)

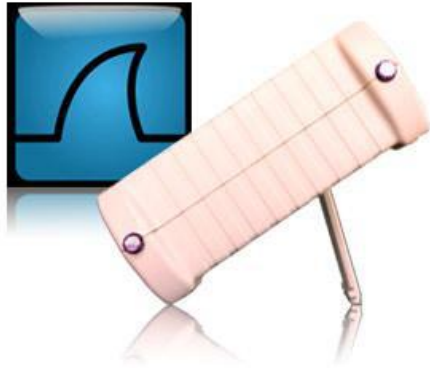
- ◆ do not pass bad / long / short frames, or VLAN tags
- ◆ change timing – you can't do any timing studies, no jitter ...
- ◆ MP / replication is low priority of a switch and thus issues

Consequently

- ◆ Monitor ports are NOT acceptable law enforcement surveillance
- ◆ Monitor ports are NOT acceptable for Compliance or Audit studies

>>> Use a Net.Shark because it can do the job

Unique Tap & Storage device



- 1 kg
- Battery
- Keyboard + Screen

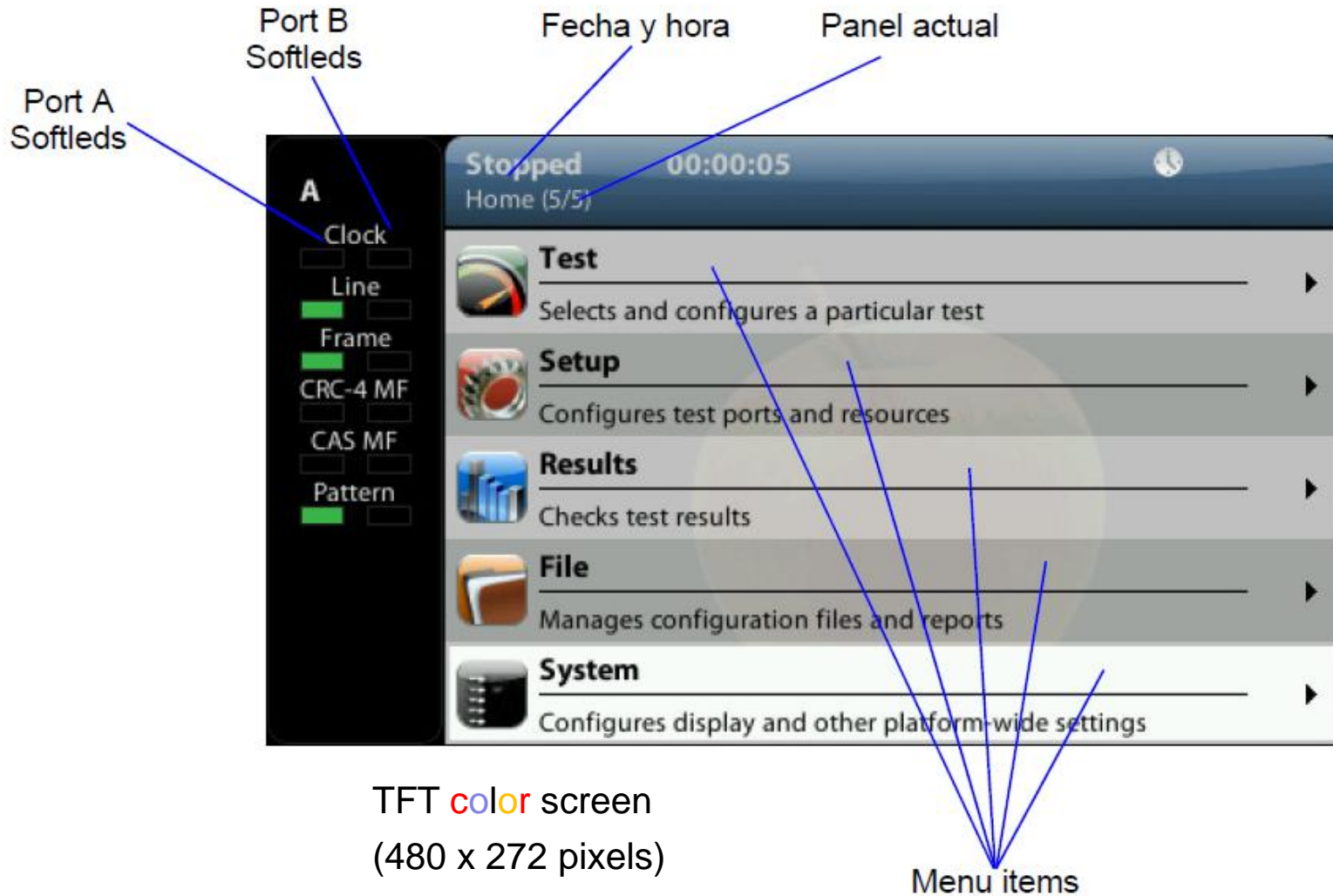


- SFP - Span Ports
- RJ45 - Drop Port

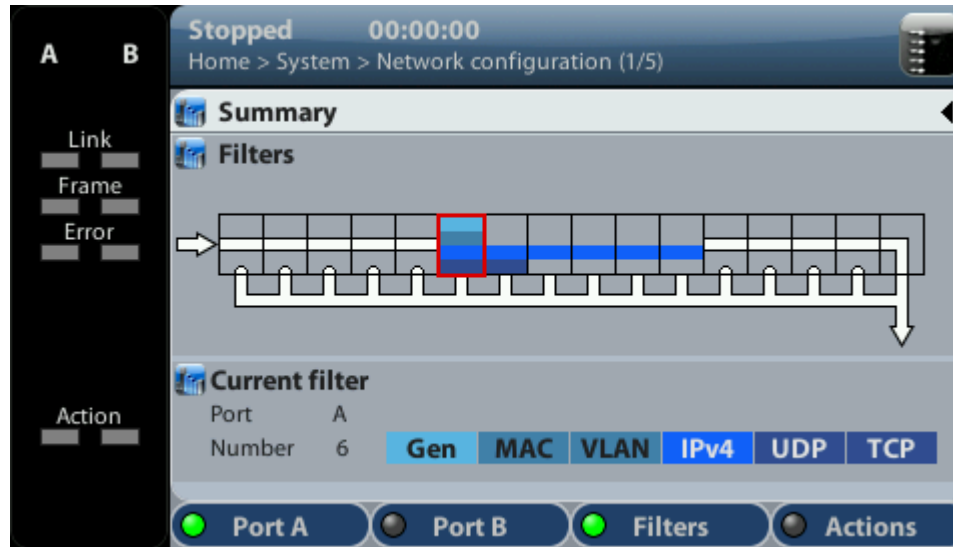


- Remote Control Port
- USB and Printer

Net.Shark – Easy GUI for field engineers



Net.Shark vs. Filtering



Net.Shark

- ◆ equipped with 16 filters to capture traffic in real time
- ◆ Full DupleX Operation means independent Up/Downstream filters
- ◆ All filters (16+16) can work simultaneously at wirespeed (1Gb/s + 1Gb/s)
- ◆ Multiplayer filters: MAC, VLAN, IP, UDP, TCP, etc.

Net.Shark : Unique Tap & Store device

World **first** hand-held tool

- ◆ **Captures ALL packets** that are
 - Compliant with a trigger condition
 - Compliant with any of the 16 programmable filter

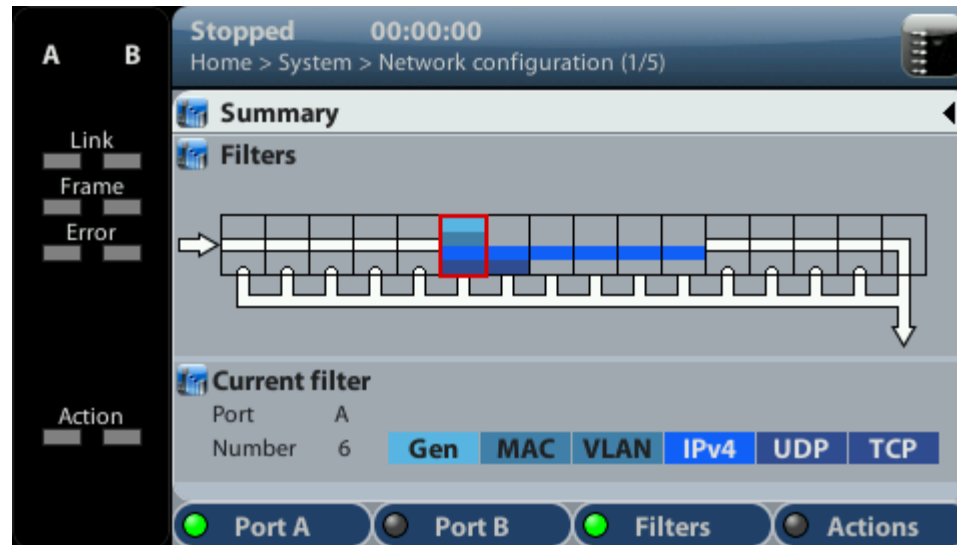
- ◆ **C&P** compliant IP packets

- ◆ Caught packets can be
 - **SAVED** in PCAP in an SD card
 - **TAPED** to 1000BASE-T

All the operations at **wirespeed**



Net.Shark – Tap & Filtering



Net.Shark is equipped with 16 filters to capture traffic in real time

Net.Shark : Unique Tap & Store device

Ethernet filters 16 simultaneous filters can be applied to the traffic

- Customizable by Ethernet, IP, UDP and TCP
 - Agnostics filters by 16 bits masks and offset
 - Lawful filter: 64 byte pattern
- Ethernet filters 16 simultaneous filters can be applied to the traffic
 - By source and destination MAC addresses.
 - Selection of MAC address sets with masks
 - By Ethertype value with selection mask
 - By VLAN-VID with selection mask
 - By VLAN-CoS value with selection mask
 - IP filters
 - IP address: source, destination, or both
 - IP address group: subset of addresses filtered by masks
 - Protocol encapsulated (TCP, UDP, Telnet, FTP, etc.)
 - DSCP field, single value and range
 - TCP/UDP port, single value and rangeCaptures ALL packets that are



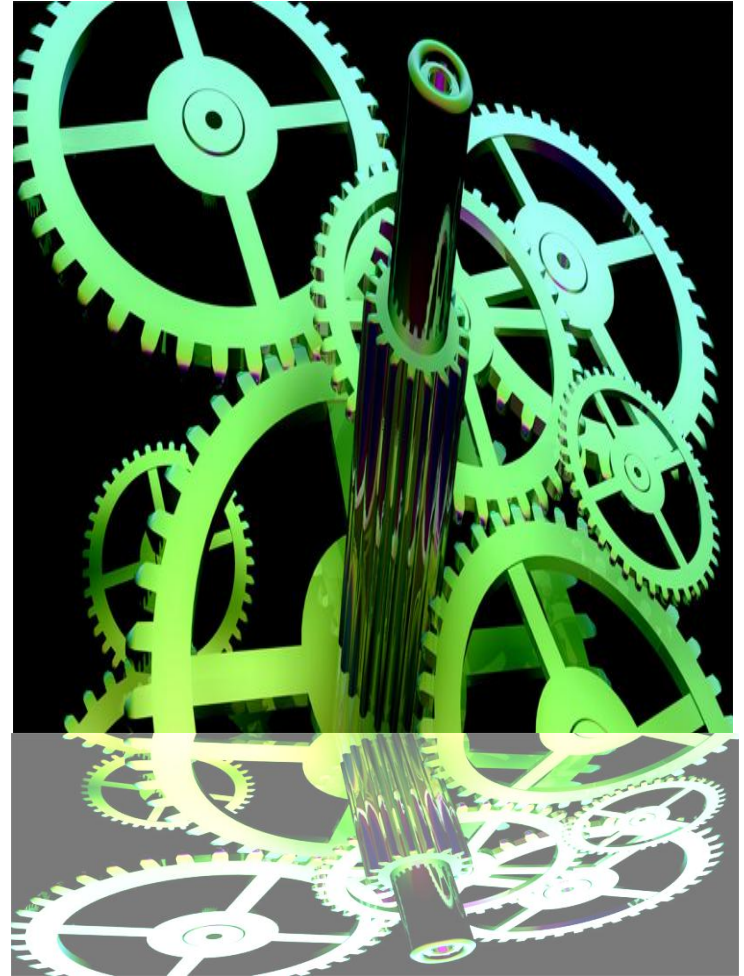
Field Applications

- ◆ Protocol Analysis VoIP, IPTV
 - Indoors Operatation
 - Field Operation
 - WiFi captures

- ◆ Security – Packet capture
 - Internet analysis
 - 100% capture is a must
 - Intelligence agencies

- ◆ Enterprise
 - Protocol Analysis
 - Troubleshooting

- ◆ Lawful interception
 - Local Police
 - Gov. Inteligence



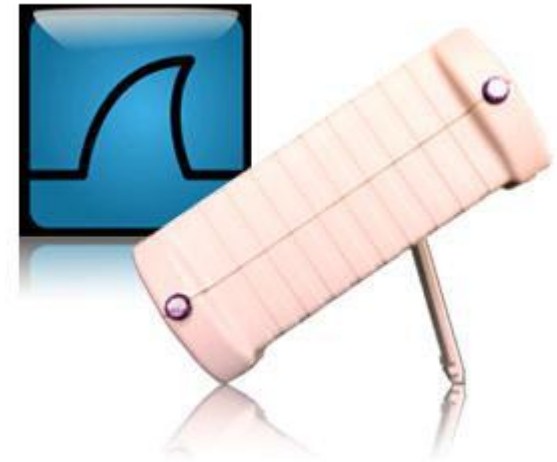
Net.Shark - Competitors



Net.Shark - Benefits

Fast Setup & Run, no PC needed

- ◆ Hand held with batteries
- ◆ Local & Remote Control
- ◆ 16 real time filters
- ◆ Full Duplex Capture (Tx Rx)
- ◆ Aggregated drop
- ◆ Save in Memory Card



i-Remote Control

Why Net.Shark



- ◆ **FIELD OPERATION:** hand-held (4h. with batteries)
- ◆ **STORAGE CAPACITY:** PCAP captured packets
- ◆ **HARDWARE PERFORMANCE:** 100% lossless at GbE
- ◆ **FDX TIME STAMPS:** protocols are full duplex
- ◆ **REMOTE CONTROL:** from any VNC platform
- ◆ **ACCURATE REPORTING:** for further analysis

That's all



www.albedotelecom.com



ALBEDO
Telecom
the Path to Excellence